

Event Calendar

Wednesday 1st June, 4pm

Chevening Apartments

7 July

Mid-winter Dinner –
CELEBRATING SUCESSFUL WOMEN
at Two Souls Bistro

- Speaker: Hon Hekia Parata
- Cost: Members \$30,
Corporate & Gold companies -
Tables available 6-8 guests
Subsidised by NAWIC

End August

NAWIC AGM

President's Report

We are always pleased to offer site visits of interest around the city, and the start of this year has been no exception. The visit to the Kilbirnie Indoor Stadium in February was a great way to start off; this was followed by the workshop visit of the 'First Light' bach project in April, WCC Central Housing Project in May, and the Chevening Apartments Seismic Upgrade this week. We try to offer a range projects, in differing stages of completion and at different times during the day. It is not always possible to get to all site visits, but we hope you get to see at least a couple during the year. Unfortunately the after work site visits are hard for me to attend, and I have missed them all so far. However, I was able to visit the 'First Light' Project bach at Frank Kitts Park as a public visitor the day before it closed. I was so impressed; it was a fabulous example of what our talented Grad students can produce. I enjoyed it on so many levels, the look, the sustainability aspect, the energy efficient services, the interior joinery with hidden cupboards, the triple glazing, and how well they had captured the iconic Kiwi bach concept. I was amazed with the high number of public who had stopped in for a tour (approx. 20,000), and it was fascinating to hear their comments. Nick and his team will be worthy ambassadors for New Zealand when they compete in Washington in July. We all wish them well.

We have also been invited to two 'Connect' events, and to several CIF events.

The NAWIC Board met on 16th May for a planning session for the year ahead. We are organising a Mid Winter dinner – Celebrating Successful Women on 7th July so please put the date in your diary now.

I am looking forward to catching up with you at our next NAWIC function.

Warm regards
Stacey Mendonca
NAWIC President
rsvp@nawic.org.nz

NAWIC Member Profile

Name?

Nicola Cornforth

What did you study/graduate in?

Diploma in Hospitality Management and more recently Certificate in Interior Décor.

What are your interests?

Spending time with friends and family, shopping, going to the movies and theatre, seeing the world and NZ!

What got you interested in this industry?

I was working at the Museum Hotel when we started developing the Museum Apartments. Being given free reign to buy the homewares for the showroom apartment was heaven. Whilst watching the Bond and Bond shop being demolished was mind boggling – I had no idea that machines could pull buildings down that quickly!

Where do you/have you work(ed)?

Since embarking on my new project management career I have worked at CentrePort and am now at Beca. My previous career had me working in hotels here in Wellington and Dublin.

What are you currently working on?

Closing out the EMU Depot project, seismic strengthening and upgrade of Chevening Apartments and set up work on a CSA project.

What is your dream job?

Construction and fitout of a 5 star hotel.

What motivates you?

New challenges and having a job which excites me.

Who is a role model to you?

I have two bosses from previous jobs that are amazing women.

Do you have any words of wisdom?

Try everything at least once.

What is your favourite...

Café - Nikau

Cheese - Mainland Special Reserve Creamy Blue

Shop - Mango

Wine - Gisselbrecht Pinot Gris

Colour - red



Affiliated Event

Habitat for Humanity Volunteer Day



10 staff from Studio Pacific Architecture rolled up their sleeves and offered to pick up the tools on a volunteer day helping Habitat for Humanity build a new house for Petronella and her two daughters, helping them get out of the rut of life in poor quality rental housing. Their new house is being built off a kitset plan on land kindly donated for temporary use next to the McDonalds in Porirua, calling upon large amounts of volunteer labour, material and financial donations, and 'sweat equity' by the family receiving the house, which they will rent and eventually buy. The partially-built house is soon to be transported to its final location in Cannons Creek and completed, and an adjacent Habitat house built on the site next door.



The site manger Bruce had his hands full with a big turnout, and split the team into indoor crews installing Gib lining on ceilings, and exterior crew painting the house. Progress was made quickly with their professional guidance, and within the course of the day, there were already two coats of paint on the house, and the interior ceilings and most walls lined. Aside from the benefits of the volunteer effort, SPA staff learned a fair bit in the process as well. Petronella actively helped organize our volunteer days on site, and came around to visit us, showing us the paint palettes she had helped select, and excitedly explained the future layout of the house and deck on the site.



SPA have some more days lined up to continue help building, once Resource Consent is granted and work can proceed on the actual site. NAWIC are also meeting with Habitat for Humanity to discuss ways in which we can become involved as well; Habitat are thrilled about the prospect of promoting a Women's Build on a house. Any and all skill levels are welcomed on site; the site managers organise and supervise the work so all levels of experience are accommodated. We'll keep you posted of developments – if not on these projects in Cannons Creek, they are also pursuing some sites within Wellington.



Shauna Herminghouse

Affiliated Events



Women in Engineering

On the 18th March IPENZ launched a new initiative entitled 'The Retention and Renewal of Women in Engineering: An IPENZ Plan to encourage diversity in and sustainability of the engineering profession'. The presentation was given to a large number of industry representatives and there were four speakers. Garry MacDonald, then IPENZ President opened the presentation, Elena Trout, Chair of the Women in Engineering Task Force, discussed the background of the initiative while Tracey Ayre, Project Manager for Women in Engineering discussed the actions to achieve the planned outcomes. The key note speaker was the Hon. Hekia Parata, Minister of Women's Affairs, and she delivered an enlivening impromptu speech following the realisation that her speech notes had been covered by the earlier speakers. IPENZ has realised that not only is the engineering profession missing out on a number of NZ's brightest entering the profession, those that are working are not remaining in the industry. IPENZ has launched this initiative with a plan to identify areas where change is required, an outcome and actions to achieve this outcome. From the initiative brochure the desired outcome states:

The IPENZ long-term vision for women in engineering:

"As a result of its diversity, engineering is seen as making a highly relevant contribution to New Zealand's economic growth and well-being. The engineering profession is recognised as an employer of the best and brightest. Engineering workplaces are diverse and have exemplary employment practices. The number of engineers is sustainable on the long term."

The success of this vision will be reflected in the diversity of the Institution's Membership and the successful completion of the actions planned.

The Retention and Renewal of Women in Engineering plan can be viewed at the IPENZ website www.ipenz.org.nz. Further information can be found here also or by calling IPENZ on 04 473 9444.

Nicola Cornforth

Site Visit

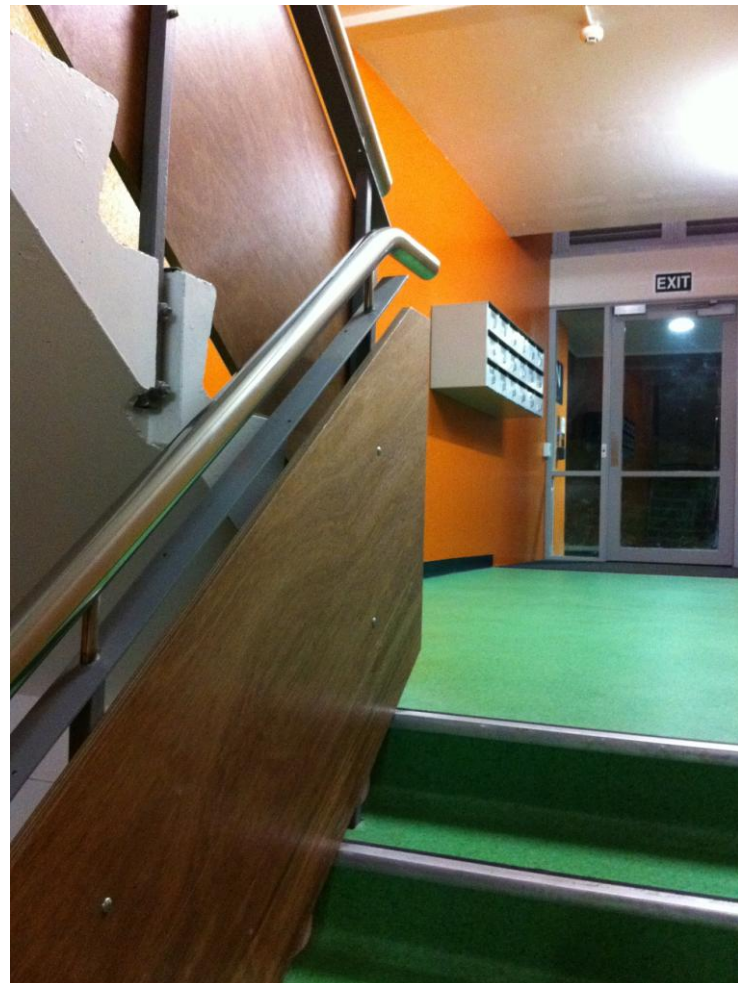
WCC Central Park Housing Project

The NAWIC tour started with visiting the existing road block, and two unaltered units there. This showed us the existing long, wide corridors, and internal stair towers, which combined with public doors, meant that anyone could be moving through the building and using it as a short cut between Brooklyn and the city.

In the completed areas, the Novak Middleton design, as explained by Jo Dovey, changes the circulation into a group of 12-18 units all sharing a secure lobby and staircase. The group also have access to the roof terrace above their stair. Each lobby, and stair is glazed to the outside, and has an identifying colour and letter to improve wayfinding in the complex. The main change from existing to new units is the integration of the kitchen with the living area. The new kitchens utilise the existing wooden joinery, with new units added to give greater storage and bench space, and can take any size of fridge. The old corridor space has also been included in the units, and some studio units have been amalgamated. This gives more two and three bedroom units which suit the current demographic.

Overall, the colours, layout and warmth of the completed units were impressive. Thank you to WCC Project Manager Rachel van Doorn, and Jo Dovey for their explanations of the project.

Lianne Cox



Meridian First Light House

On the 7th of April, NAWIC members had a fantastic opportunity to visit the Meridian First Light Solar House during its construction at a warehouse in Lyall Bay. The First Light house is a competitor in the U.S. Department of Energy Solar Decathlon, a prestigious student-design competition held every two years in Washington D.C.

First Light (from Victoria University, Wellington), is the only team in the southern hemisphere to have qualified for the competition, and will be heading to the National Mall in September this year to be judged on 10 aspects of their solar house: architecture, market appeal, engineering, communications, affordability, comfort zone, hot water, appliances, home entertainment, and energy balance.

First Light's design is based on the concept of the traditional Kiwi Bach – simple, small, family-oriented, and designed in sympathy with its natural surroundings. The logistics of shipping the house from Wellington to Washington D.C. has also heavily influenced the design of the house, as well as the requirement to re-assemble the house in a seven day time span.

The house consists of six modules, each structurally independent. Each module has steel foundations, an LVL floor with a 50mm fibre-reinforced concrete topping, and an LVL wall structure with timber and plywood bracing. The roof is constructed from CNC-cut plywood ribs, LVL and timber, with photovoltaic roof panels atop. All windows are triple glazed, including the large feature aluminium/timber composite skylight. The house has a detachable cladding system, with cedar panels clipping onto a waterproof plywood rainscreen. All internal linings are plywood. These materials were chosen for their strength and robustness, vital when considering the number of assemblies and disassemblies required of this project.

State-of-the-art energy efficient building services are integrated carefully into the building design. A services duct runs along the length of the building, hidden in the ceiling space and leading to the 'services shed' at the back of the house. Information about the house's energy use is monitored, and statistics such as peak energy usage, peak energy production, climate data and water usage are able to be accessed by the occupant. Fixtures, fittings and appliances in the house are selected on the basis of their energy efficiency and commercial availability. In addition to the 240mm thick wool insulation, a reverse-cycle heat pump provides active air conditioning when needed – ensuring the maintenance of a 21°C -24°C temperature.

At the time of our site visit, the First Light house was in its final stages of construction, with final finishes still to be completed. Recently, the finished house was pulled apart, transported to Frank Kitts Park, re-assembled, and opened to the public. This has served as a practice run prior to the team's departure for the competition in September, where 300,000 people are expected to visit in a 10 day period.

Gazelle Monifar

