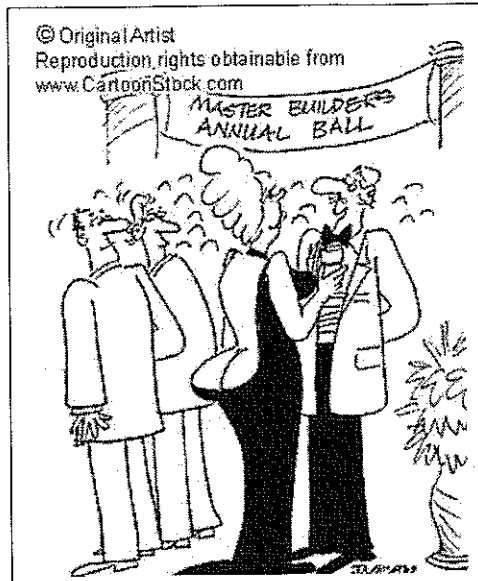
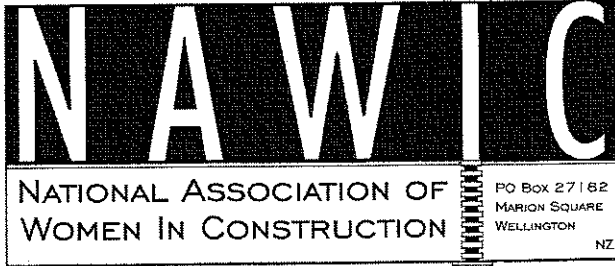


# NAWIC NEWSLETTER

June 2006



## EVENT CALENDER

**July** – Wednesday 5<sup>th</sup> @ Plumbing Store  
**August** - 16<sup>th</sup> & 17<sup>th</sup> Coco Cola Careers Expo  
**September** – AGM 28<sup>th</sup> @ Southern Cross bar,  
Speaker: Patrick Arnold E<sup>3</sup>  
**October** - Thursday 12<sup>th</sup> - 10<sup>th</sup> Anniversary Party  
- 1<sup>st</sup> – 8<sup>th</sup> Architecture week

## PRESIDENTS REPORT

Welcome to the NAWIC June newsletter. We intend the newsletter to be a regular thing, so any news or issues you would like to raise, this is your venue. Don't forget to read it all - the response to our (very easy) quiz in the last newsletter was minimal!

In March, Jane Cuming, Deb Cranko and I attended the IPENZ (Institute of professional engineers) conference session and workshop organized by Women in Engineering (WIE). The aim of the workshop was to start the process of identifying tools that IPENZ could employ to address the issues facing women in the profession. Many of these issues are equally relevant to the construction industry.

Among the issues raised were: proving credibility as a competent consultant to colleagues and clients; combating prejudices / negative attitudes of others; lack of flexibility in the workplace; stereotype engineering 'culture' (drinking etc, especially the students!); lack of encouragement for women into the industry; difficulty in retaining women in the industry.

Some preliminary 'tools' identified to address these issues were: 'rebranding' engineering / promoting a 'counter' culture outside the traditional; outreach in schools; promoting role models to young women; greater flexibility in the workplace - hours, maternity leave etc; mentoring and networking among women engineers.

We look forward to future developments from IPENZ/WIE. Many thanks to the Human Rights Commission for their sponsorship.

In April, Matisse hosted a presentation by Kate North, Strategic Director of Matisse International. Kate's enthusiasm was very catching, as she presented to us possible scenarios of the future of the workspace. Thanks also to Matisse for allowing us to use their showroom and view the beautiful furniture on display. See also the website addresses later in this newsletter.

Earlier this month we were treated to a tour of Formway factory in Gracefield. For those of us usually coming into town at that hour of the morning, it was an added bonus to drive in the opposite direction to the traffic jam, on a beautiful crisp Wellington morning.

The 10<sup>th</sup> anniversary celebration dinner will take place on 12 October - more details soon. As part of this event, we intend to present the Helen Tippet Memorial Award to a woman who has made a significant contribution to the industry over the past 10 years. We are seeking nominations - refer to the article later in this newsletter. Please take the time to think about this - Helen was a very important part of the building industry in Wellington, and we believe this will be a fitting way for NAWIC to commemorate her.

**Marian Salmon**  
President

# NAWIC NEWSLETTER

June 2006

## FORMWAY FACTORY TOUR

Well we had a wonderful factory tour of Formway on Friday 9<sup>th</sup> June, with 13 NAWIC members attending.

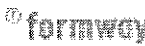
A special thanks to the Formway staff Bob, Peter, Neil & Sonny who were our informative and witty tour guides, and to Belinda Cogswell from NAWIC who organised this event. Those who attended the event learnt a great deal about the process of furniture manufacturing. Formway are a company who are constantly modifying and implementing new & innovative design techniques and promoting health and safety. A prime example was 'The Elephant' (a suction tool that carries table tops - too prevent back injury) and also the 'Robots' that are used to weld metal components together.

We saw first hand, how a profiled plastic arm for the 'Life chair' is formed – a chemical reaction involving a liquid substance is poured that has foam in it – self expands and once cooled, hardens to the moulded shape.

Unfortunately we were not able to sneak into the design room to view upcoming ideas (like the FBI - it was out of bounds due to highly classified material)

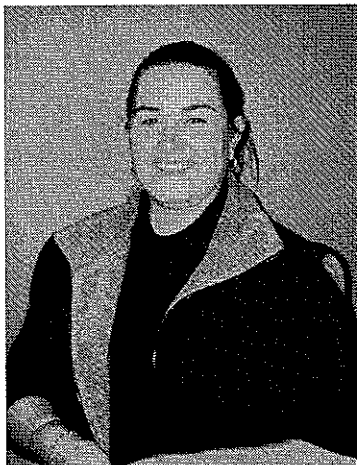


The Life Chair

For more information on  please check out there website

## PERSONAL PROFILE

**Name:** Janine Greening  
**Job:** Quantity Surveyor  
**Place of work:** Choice  
Commercial Interiors Limited



*Where did you study?*

**Christchurch @ Massey**

*What did you graduate in?*

**Diploma of Quantity Surveying & Bachelor of  
Construction (QS) BCQ's**

*Where have you worked?*

**Out of school into a painting company, then Forman  
Commercial followed by current role @ Choice  
Commercial**

*What got you interested in this industry?*

**My Father has a background in building**

*Any words of wisdom you can pass on?*

**Recommend this industry to other young women- it  
was a struggle initially to be accepted (it's a man's  
world) but once respected really good.**

# NAWIC NEWSLETTER

June 2006

## **THE HELEN TIPPET MEMORIAL AWARD**

**“For a woman who has made a significant contribution to the Building Industry between 1996-2006”**

NAWIC wishes to celebrate Helen's 25 year contribution to the Industry in New Zealand and in particular Wellington by awarding The Helen Tippet Memorial Award to someone who has contributed significantly to the Industry over the last 10 years. We are seeking nominations of women you think have made significant contributions.

Your nomination should take the form of a 200 - 300 word submission including their work history and any completed projects during the period from 1996 – 2006 that you think has made a significant impact on the industry or their chosen discipline.

The winner will receive \$2500 and a certificate in recognition.

Please send your nomination to Marian Salmon at [seddon.associates@clear.net.nz](mailto:seddon.associates@clear.net.nz), fax 04 385 1289 or post to NAWIC, P O Box 27 182, Marion Square, WELLINGTON.

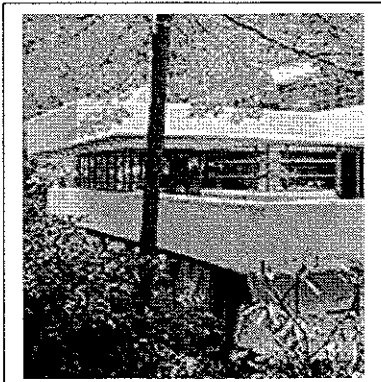
Helen arrived in Wellington after a decade of teaching at Melbourne University and became Dean of the School of Architecture soon after. She was passionate about her subject and was an advocate of affordable sustainable quality housing – she deplored the fact that architecture had become so expensive as to make it irrelevant to most people. She was often caught up in controversy in particular the moving of the School of Architecture from the Kelburn campus to where it is today. She was once described as a “pocket Aussie battleship”. Helen was also one of the founders of The Architects' Collaborative which developed the Hannahs Warehouse as accommodation for their families as well as giving young graduates the chance to practice their skills in an internship arrangement, the Collaborative is still operating today from the same location.

Professor Tippet's most significant contribution was her 10 Year commitment to building industry reform, culminating in four years on the Building Industry commission from 1988. The result was a uniformed building code with performance-based standards.

She was the first woman president of an Institute of Architecture and was a fellow of professional organizations on both sides of the Tasman. Appointed Associate Dean of Science in 1998 and named emeritus professor in 2000, Helen was awarded an OBE in 1994.

### **Nominations close 31 August 2006**

The winner will be announced at NAWIC's 10<sup>th</sup> Anniversary celebration on October 12<sup>th</sup> @ Chow (further details on this night to follow).



## **COMPETITION**

Name this architectural icon, it's location, the architect and the when it was constructed. First correct answer will gain free entry to our next event!

Email your answer to [megan.smailes@orica.com](mailto:megan.smailes@orica.com)

The answer to April's edition was:

The City to Sea Bridge by Athfield Architects

# NAWIC NEWSLETTER

June 2006

## WEBSITES

The following addresses are in relation to the talk given by Kate North at our Matisse function earlier in the year:

- [www.corenetglobal.com](http://www.corenetglobal.com)
- [www.nzgbc.org.nz](http://www.nzgbc.org.nz)

## CLASSIFIEDS

**ACCENT**  
**ARCHITECTS**



### Registered Architect or Senior Drafter Opportunity

Accent Architects is a Wellington based team of 12, which is headed by one of New Zealand's foremost Woman Architect's; Gina Jones.

The practice has recently relocated to stunning new offices in Thorndon Quay and requires a Registered Architect or a Senior Drafter to join their young dynamic team.

Accent Architects has one of their senior people working two days per week, while raising a young family, so the practice is open to people job sharing or working part-time.

The work type is diverse and split evenly between Residential, Education, and Commercial architecture. The CAD software used is AutoCAD.

Accent Architects attracts bright, motivated, and personable people. If you have these characteristics, and would like to discuss a flexible opportunity at a fast growing and dynamic practice, then please contact:

Malcolm Fleming  
Tel: 04 939 8222  
Email: [malcolm@accentarch.co.nz](mailto:malcolm@accentarch.co.nz)  
[www.accentarch.co.nz](http://www.accentarch.co.nz)

## SPCA

Due to a laundry fire any towels, blankets or woollen jumpers would be greatly appreciated.

Please drop off at the Newtown SPCA, 305 Mansfield Street, Newtown

Ph: 389 8044



Do  
You  
Want  
This  
Space?

## MEMBERSHIP

To join NAWIC Wellington or if you are on the move . . . . .

Please contact Nicola Yortt  
email: [nicola.yortt@halstead.co.nz](mailto:nicola.yortt@halstead.co.nz)

NAWIC, PO Box 27 182,  
Marion Square, Wellington

## MEMBERSHIP PROMOTION

Check out our membership promotion for the 2006/2007 year, refer to the attached flyer and membership form

## WEBSITE

We now have a website, check it out at:  
[www.nawic.org.nz](http://www.nawic.org.nz)